

Looking Forward to an awesome 2020-2021 School Year!

TIARRA KEMP, LMSW SCHOOL SOCIAL WORKER

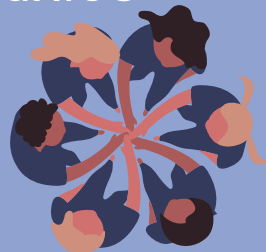
BE THE CHANGE
YOU WISH TO SEE.
- GHANDI

CONTACT INFORMATION:

KEMPTI1@RICHMOND.K12.GA.US

(706) 513-3122

Assigned Schools -
Barton Chapel Elementary
Glenn Hills Elementary
Glenn Hills Middle
Glenn Hills High



HOW CAN YOUR SCHOOL SOCIAL WORKER SUPPORT?



Direct Services to address immediate concerns:

- Crisis intervention
- Home/school/community liaison
- Mediation
- Small group counseling
- Biopsychosocial Assessments
- Family support
- Individual student support
- Behavior management

Indirect Services to address at-risk student concerns:

- Advocacy
- Collaboration
- Parent Education
- Community Collaboration
- Teacher/Admin Consultation
- Multidisciplinary Team Member
- (RTI/IEP/504/Mental Health Teams/Attendance)
- Referrals
- Staff Development

If you have a concern about a student, please complete a referral in SWARM in Infinite Campus as soon as possible. Feel free to contact me with any questions or concerns.

